

NRHS MEMORIAL DAY PARADE

Itinerary & Info Sheet

Itinerary

7:45 AM Band Room unlocked – Those who play a school instrument – report and load

8:00 AM NRHS Locked – Band Trailer Leaves with Instruments

8:20 AM Report at ASSUMPTION PARKING LOT ** NEW LOCATION **

8:30 AM Get Instruments off Band Trailer – Warm Up in Parade 8's

9:00 AM Parade Step-Off

9:45 AM NRHS and BBHHS Band combine to perform America the Beautiful at the ceremony

10:15 AM Load big instruments on the Band Trailer – or dismissed if you own your own inst.

10:30 AM Unload instruments back at NRHS Everyone must unload their own inst.

10:30 AM Dismissed

Parade Route: Assumption Parking Lot to the Broadview Center Community Building

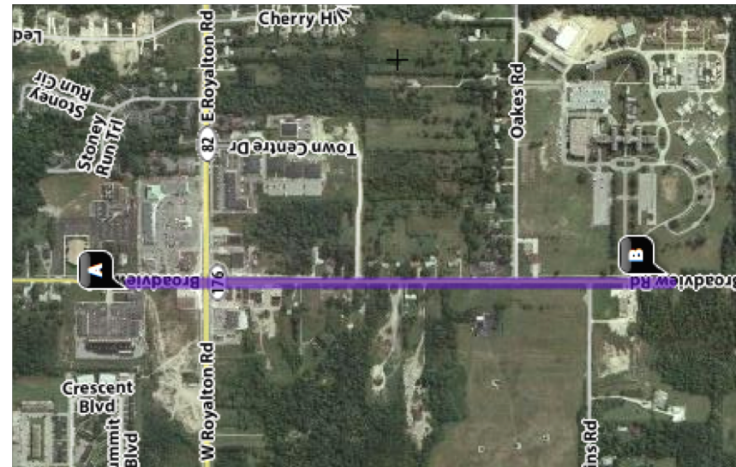
Attire: Purple Band Polo, KNEE-LENGTH KHAKI SHORTS, Black Marching Band Shoes, Black Socks, Black Shoes, Black Belt

****Get Dropped off at Assumption Parking Lot****

****Have a car at the Broadview Community Center or plan on being picked up there****

****Car Pool if Possible****

DRINK WATER BEFORE REPORTING FOR THE PARADE!!



BAND-A-RAMA

Itinerary

6:20 PM Report

6:30 PM Find your seat in Gym 1

6:40 PM Warm up in seat in Gym 1

7:00 PM Concert Begins

7:45 PM Concert Ends – ALL HS Band members help with Stands, Chairs, Perc Equipment, etc.

REMINDERS:

- **Attire: Purple Band Polo, Khaki PANTS, Black Marching Band Shoes, Black Socks, Black Shoes, Black Belt**
- **At the conclusion of the concert, EVERY student needs to take their stand back to the band room and rack their chair.**