



# NORTH ROYALTON HIGH SCHOOL BAND

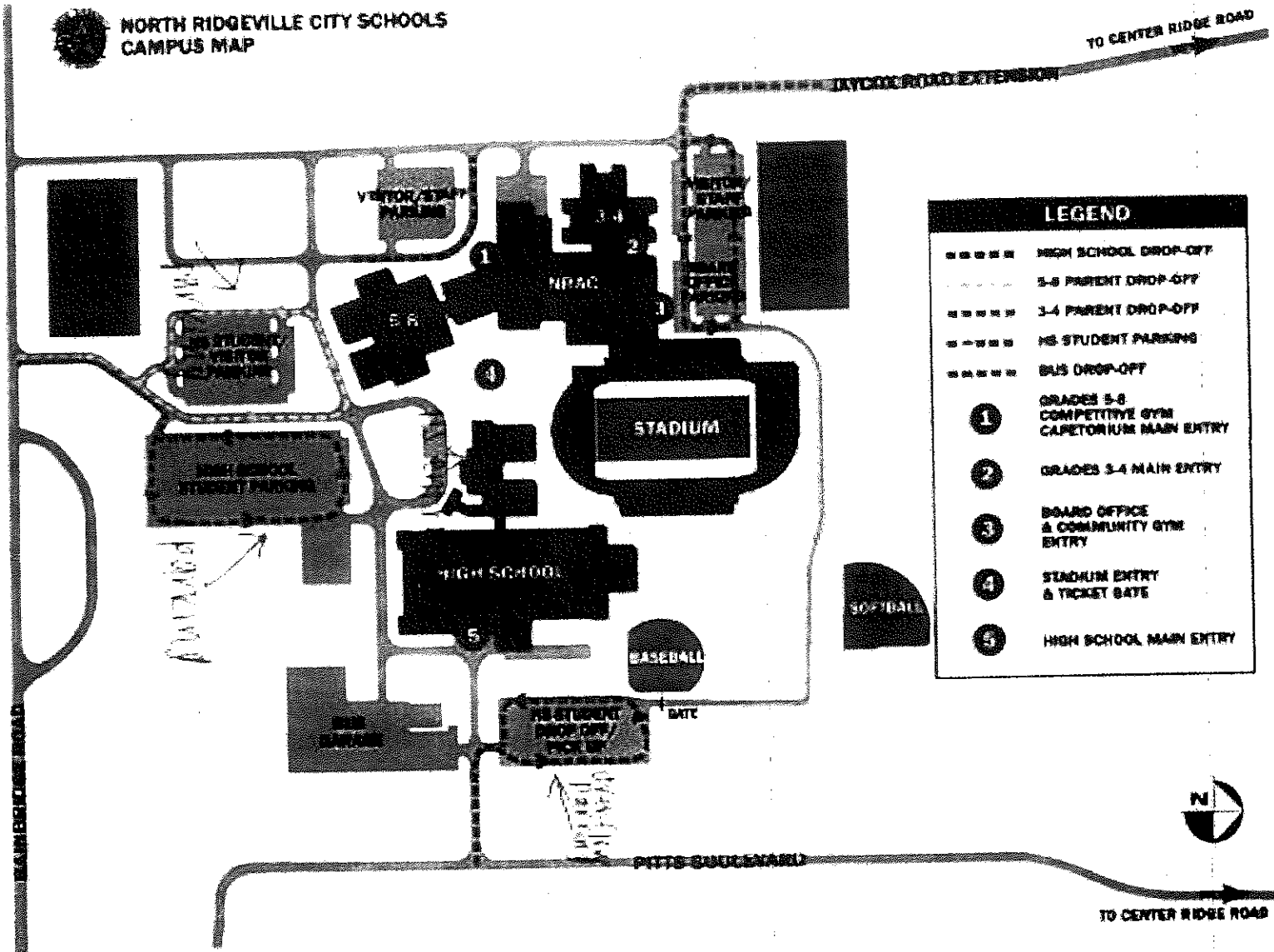
## Solo & Ensemble Contest Reminders

Saturday, February 9

North Ridgeville HS

- Please obey the following rules and guidelines – our entire school could be disqualified from future OMEA events if participants do not observe these rules.
- All students must be quiet in the performance room, homerooms, and cafeteria areas.
- **No audio or video recording** of any kind is permitted, and **no photography** of any kind is permitted
- Cell phones must be turned **completely OFF** when in a performance room
- Students must have an **original copy** to give the judge – photocopies are not permitted
- The Judge's copy must have all the **measures numbered** – a penalty of one rating will be levied for failure to comply
- Performers must perform scales from memory, and they are to be played evenly and smoothly, ascending and descending at least one octave, except clarinet and piano, who will play each scale two octaves. The list of required scales/rudiments can be found online on the band website
- Students should dress up for this event – remember you are representing the North Royalton High School Band!
- Students are advised to arrive to the event at least 45 minutes before their performance time.
- Upon arriving, students should familiarize themselves with the venue, and should locate the homeroom/warm up room, and their performance room
- Students should check with the room chairperson and see if their room is running ahead, or running behind – it is very common for a room to be ahead or behind
- Students should warm up in the designated warm-up areas **ONLY** – any playing the hallways could result in disqualification of the entire school
- After an adequate warm-up, students should be at the warm-up room about 15 minutes early to be sure they are ready in case the room is running ahead
- Don't play too much in warm-up! Long tones, Five, High Middle Low, and slow scales are all appropriate for you to warm-up on. Do not play the highest/hardest parts for warm up...
- Be sure you thank and compensate your accompanist after your performance. Even if the event is snowed out, or you decide to cancel at the last minute – you still need to compensate your accompanist for the time and effort they took to learn your piece, rehearse with you, put it together, etc.
- When you are done performing you can get something to eat, relax while waiting for your rating – There is no official length of time when it comes to how long it takes to post a rating. It depends on how quick it gets through the office. After your rating is posted, see a director and they can retrieve your comment sheet – only directors can get these sheets. Students, parents, and private lesson teachers are not permitted to retrieve these sheets.

**NORTH RIDGEVILLE CITY SCHOOLS  
CAMPUS MAP**



LEGEND	
	HIGH SCHOOL DROP-OFF
	5-8 PARENT DROP-OFF
	3-4 PARENT DROP-OFF
	HS STUDENT PARKING
	BUS DROP-OFF
	GRADES 5-8 COMPETITIVE GYM CAPETORIUM MAIN ENTRY
	GRADES 3-4 MAIN ENTRY
	BOARD OFFICE & COMMUNITY GYM ENTRY
	STADIUM ENTRY & TICKET GATE
	HIGH SCHOOL MAIN ENTRY



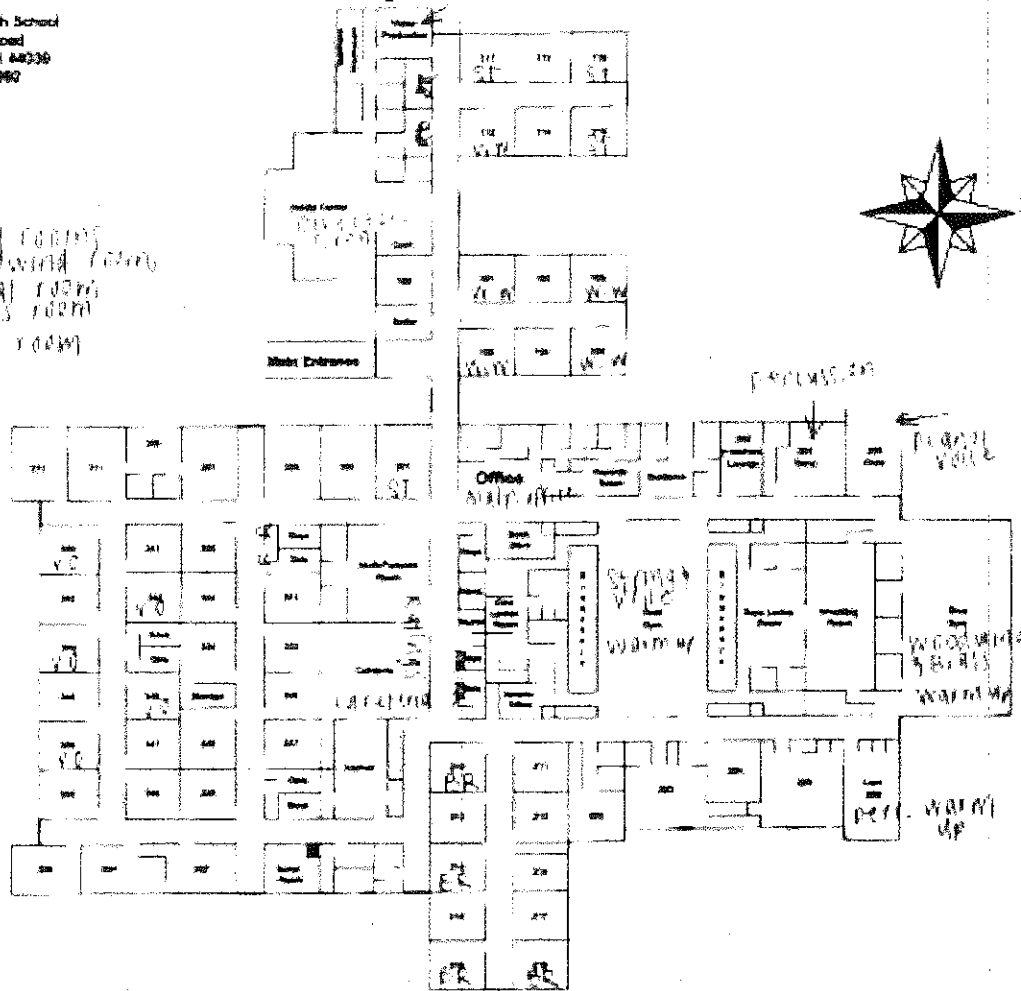
TO CENTER RIDGE ROAD

TO CENTER RIDGE ROAD

North Ridgeville High School  
 34800 Beechbridge Road  
 North Ridgeville, OH 44036  
 Phone: (440) 327-1960

SI = Spined Coring  
 WW = Woodwind Coring  
 VR = Vocal room  
 BR = Brass room  
 RR = Rest room

piano  
 warm up  

## Scales and Rudiments

VII.U.7 Scales for all instruments are to be played evenly and smoothly, ascending and descending, one octave, except for Bb soprano clarinet which plays two octaves. Each tone of the scale should be at a speed of quarter note = 80-120 beats per minute.

VII.U.10 High School string soloists will be asked by the adjudicator to perform two major scales from the following:

VII.U.10 Violin Class A: - Major Scales, Octave(s) required in ( ): C(2), G(3), D(2), A(3), E(2), B(2), F(2), Bb(2), Eb(2), Ab(2)

VII.U.10 Violin Class B: - Major Scales, Octave(s) required in ( ): C(2), G(2), D(2), A(2), E(2), F(1), Bb(2), Eb(1)

VII.U.10 Violin Class C: - Major Scales, Octave(s) required in ( ): C(1), G(2), D(1), A(2), F(1), Bb(1)

VII.U.10 Viola Class A: - Major Scales, Octave(s) required in ( ): C(3), G(2), D(3), A(2), E(2), F(2), Bb(2), Eb(2), Ab(2)

VII.U.10 Viola Class B: - Major Scales, Octave(s) required in ( ): C(2), G(2), D(2), A(2), F(2), Bb(1), Ab(1)

VII.U.10 Viola Class C: - Major Scales, Octave(s) required in ( ): C(2), G(1), D(2), A(1), F(1), Bb(1)

VII.U.10 Cello Class A: - Major Scales, Octave(s) required in ( ): C(3), G(2), D(3), A(2), E(2), F(2), Bb(2), Eb(2), Ab(2)

VII.U.10 Cello Class B: - Major Scales, Octave(s) required in ( ): C(2), G(2), D(2), A(2), F(2), Bb(1), Eb(1), Ab(1)

VII.U.10 Cello Class C: - Major Scales, Octave(s) required in ( ): C(2), G(1), D(2), A(1), F(1), Bb(1)

VII.U.10 Bass Class A: - Major Scales, Octave(s) required in ( ): C(2), G(2), D(2), A(2), E(2), F(2), Bb(2), Eb(2), Ab(2)

VII.U.10 Bass Class B: - Major Scales, Octave(s) required in ( ): C(1), G(2), D(1), A(1), F(2), Bb(1), Eb(1)

VII.U.10 Bass Class C: - Major Scales, Octave(s) required in ( ): C(1), G(1), D(1), A(1), F(1), Bb(1)

VII.U.8 Note: High school wind instruments (excepting trombone) will play one major scale and one chromatic. Trombone, Melodic Percussion (including Steel Drums) soloists will perform two major scales (no chromatic). Steel Drum soloists will use the C instrument scale requirements. Bass clef baritone and other non-transposing bass clef instruments use the scales for C instruments. Treble clef baritone uses scales for the Bb instruments.

VII.U.8 C Instruments (Class A): D, G, C, F, Bb, Eb, Ab, Db, Gb

VII.U.8 C Instruments (Class B): G, C, F, Bb, Eb, Ab, Db

VII.U.8 F Instruments (Class A): A, D, G, C, F, Bb, Eb, Ab, Db

VII.U.8 F Instruments (Class B): D, G, C, F, Bb, Eb, Ab

VII.U.8 F Instruments (Class C): G, C, F, Bb, Eb

VII.U.8 Bb Instruments (Class A): E, A, D, G, C, F, Bb, Eb, Ab

VII.U.8 Bb Instruments (Class B): A, D, G, C, F, Bb, Eb

VII.U.8 Bb Instruments (Class C): D, G, C, F, Bb

VII.U.8 Eb Instruments (Class A): B, E, A, D, G, C, F, Bb, Eb

VII.U.8 Eb Instruments (Class B): E, A, D, G, C, F, Bb

VII.U.8 Eb Instruments (Class C): A, D, G, C, F

VII.U.9 High School piano soloists will be asked by the adjudicator to perform two major scales, two octaves, hands together, from the following:

VII.U.9 Class A: C, F, Bb, Eb, Ab, G, D, A, E

VII.U.9 Class B: C, F, Bb, Eb, G, D, A

VII.U.9 Class C: C, F, Bb, G, D

VII.U.11 High school drum and multiple percussion soloists (performers must provide a snare drum) will be asked to perform three rudiments open (slow) to close (fast) and to open (slow) from the following OMEA Required Rudiment List:

VII.U.11 Class A:

Single stroke Roll (#1)

Double stroke Open Roll (#6)

5-Stroke Roll (#7)

7-stroke Roll (#9)

9-stroke Roll (#10)

10-stroke Roll (#11)

11-stroke Roll (#12)

13-stroke Roll (#13)

15-stroke Roll (#14)

17-stroke Roll (#15)

Single Paradiddle (#16)

Double Paradiddle (#17)

Flam (#20)

Flam Accent (#21)

Flam Tap (#22)

Flamacue (#23)

Flam Paradiddle (#24)

Flam Paradiddle-diddle (#26)

Drag (#31)

Single Drag Tap (#32)

Double drag Tap (#33)

Lesson 25 (#34)

VII.U.13 High School Guitar Soloists will be asked by the adjudicator to perform two scales from the following:

VII.U.13 Class A: C, D, and G major-One Octave-First Position. C Major-One Octave- Beginning on the 5th string. G Major -Two Octaves - beginning on the 6th string. C Major-Two Octaves beginning on the 5th string. F Major-Two Octaves-1st position. A Major-Two Octaves.

VII.U.13 Class B: C, D and G major-One Octave-First Position. C Major-One Octave- Beginning on the 5th string. G Major -Two Octaves - beginning on the 6th string.

VII.U.13 Class C: C, D and G major-One Octave-First Position.

VII.V In any performance that includes a cadenza, the adjudicator must be provided with a notated copy of the cadenza part.  
Penalty: Comments Only.

VII.W Because of the nature of the instrument, there are no scale requirements for harp solos.

VII.X Rolling Revision Information

---

VII.Y For guitar solos there is no improvisation unless a "cadenza" is written in the music. In any performance that includes cadenza, the adjudicator must be provided with a notated copy of the cadenza part. Penalty: Comments Only.

VII.Z Performers are permitted to change their class and/or musical selection on the day of the event without penalty.

# OMEA Solo & Ensemble - North Royalton High School Schedule

ID	Time	Stage	Room	CL/GR	Event	Composition	Performer	Adjudicator	Accompanist
3703	08:10 am	218	218	A	Trumpet Solo	Concerto in Eb major	Mark Michalke	Brian Stevens	
3786	08:20 am	218	218	A	French Horn Solo	Concerto #3	Anna Kelly	Brian Stevens	
3746	08:30 am	218	218	A	Brass Quintet	Satirical Dance	Bold and Brass 4.0	Brian Stevens	
3768	08:30 am	105	105	A	Bassoon Solo	Sonata in F minor	Nicholas Taylor	Catherine Lewis	
3771	08:40 am	101	101	B	Alto Saxophone Solo	Sonata No. 3	Tyler Jenkins	Joni Stoll	
3777	09:00 am	218	218	A	Trumpet Solo	Fantaisie & Variations	Anthony Paetzke	Brian Stevens	
3734	09:10 am	101	101	A	Flute Solo	Suite Antique	Emma Sanders	Joni Stoll	
3697	09:10 am	218	218	A	Trumpet Solo	Concerto	Zach Kern	Brian Stevens	
3717	09:20 am	219	219	A	Tuba Solo	Romance and Scherzo	Brendan Burdick	Joshua Hawkins	
3774	09:20 am	112	112	A	Alto Saxophone Solo	Tableaux de Provence	Christopher Linne	James Volenik	
3766	09:30 am	102	102	A	Alto Saxophone Solo	Serenade and Rondos	Caitlyn Millsap	Kenneth McFarlan	
3749	09:50 am	102	102	B	Flute Solo	Sonata in F Major, C	Richael Rayen	Kenneth McFarlan	
3784	10:00 am	112	112	A	Saxophone Sextet	First Movement from	North Royalton HS Saxoph...	James Volenik	
3785	10:10 am	105	105	B	Bassoon Solo	Romanze	Michael Armbruster	Catherine Lewis	
4590	10:10 am	204	204 BAND	A	Percussion Ensemble	Six Slick Stix Click Li	North Royalton HS Percus...	Patrick Murphy	
3728	10:20 am	106	106	A	Oboe Solo	Concerto in d minor,	Madeline Swansiger	Pamela Graves	
3773	10:30 am	218	218	A	French Horn Solo	Concerto #3	James Anthony Michael O'...	Brian Stevens	
3756	10:40 am	106	106	C	Flute Solo	Offenbach Ballet	Julia Rouge	Pamela Graves	
3772	10:50 am	210	210	C	French Horn Solo	Aria	Muskan Shergill	Adam Reardon	
3736	11:00 am	219	219	A	Trombone Solo	Annie Laurie	Tyler Frantz	Joshua Hawkins	
3740	11:10 am	214	214	B	Trumpet Solo	Orientale	Benjamin Payne	Kenneth Young	
3731	11:20 am	218	218	A	French Horn Solo	Concerto #3	Lindsay Johnstone	Brian Stevens	
3762	11:30 am	102	102	C	Flute Solo	Menuett	Alaina Siegel	Kenneth McFarlan	
3769	11:40 am	106	106	A	Bassoon Solo	Allegro Spiritoso	Jason Kotowski	Pamela Graves	
3757	11:50 am	218	218	C	French Horn Solo	Andromeda	Michael Kelly	Brian Stevens	
3778	01:00 pm	214	214	A	French Horn Solo	Romance, Op. 67	Margaret Kaniecki	Kenneth Young	
3788	01:10 pm	218	218	C	Brass Sextet	Two Western Songs	Royalton Brass	Brian Stevens	
3754	01:20 pm	218	218	B	Brass Choir	Rondeau	North Royalton HS Brass ...	Brian Stevens	
2112	01:30 pm	105	105	A	Flute Solo	Suite in a minor	Sankara Harinie Jeyabalan	Catherine Lewis	
3743	01:40 pm	101	101	A	Flute Solo	Concerto #2 in D, K	Mary Masterson	Joni Stoll	
3764	01:50 pm	112	112	B	Saxophone Quartet	Irish Suite	North Royalton HS Sax Qu..	James Volenik	

3741	02:00 pm	105	105	A	Flute Solo	Sonate	Cassidy Payne	Catherine Lewis
3752	02:10 pm	105	105	A	Flute Solo	Sonata #7 in g	Rachel Kuchta	Catherine Lewis
3751	02:20 pm	102	102	B	Bb (A) Clarinet Sol	Nocturne	Jocelyn Jones	Kenneth McFarlan
3730	02:30 pm	112	112	A	Alto Saxophone Sc	Concerto in E Flat	Matthew Casey	James Volenik
3760	02:40 pm	102	102	B	Alto Saxophone Sc	Gypsy Rondo	Bryan LaGuardia	Kenneth McFarlan
3738	02:50 pm	101	101	A	Alto Saxophone Sc	Sonata, Op. 19	Sean Charles	Joni Stoll
3710	03:00 pm	105	105	A	Woodwind Quintet	Suite, Op. 57	North Royalton HS Woodwi.	Catherine Lewis
3759	03:20 pm	112	112	A	Alto Saxophone Sc	Sonata, Op. 19	Matthew Hu	James Volenik
3694	03:40 pm	102	102	C	Flute Solo	Villanella	Sakthi Kasi	Kenneth McFarlan