

BAND STUDY GUIDE

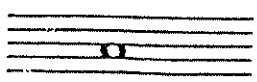
Musical Terms

1. Accidentals - signs that indicate whether a note is flat, sharp or natural.
2. Arpeggio - notes of a chord played one after another in order.
3. Chord - two or more tones sounded at the same time.
4. Chromatic Scale - a scale consisting of twelve half steps (using all the sharps and flats).
5. Clef - a sign at the beginning of a staff that determines the name and pitch of notes on the staff.
6. Coda - The finishing section or passage of a musical composition.
7. Discord - A combination of harsh or unpleasant sounds.
8. Improvisation - the creation and performance of music spontaneously.
9. Interval - the musical distance between any two notes.
10. Key Signature - sharps and flats shown at the beginning of each staff.
11. Ledger Lines - short extra lines drawn above or below the staff, on which notes are written.
12. Measure - a group of beats or division of time marked off by bar lines.
13. Melody - a succession of tones forming a musical design, consisting of motion and rhythm.
14. Meter - the pattern of beats in a composition, for example, 3/4 meter.
15. Modulation - a change from one key to another.
16. Octave - an interval of eight notes in the natural (diatonic) scale.
17. Score - the written form of a musical composition.
18. Halfstep - one half of a whole tone.
19. Step - the interval between two successive notes of a musical scale.
20. Syncopation - the displacement of the natural accent in music.
21. Tempo - the speed of a composition.
22. Theme - a musical idea in a composition.
23. Time Signature - figures (e.g. 3/4) given at beginning of a composition (or where the time changes in a piece) to indicate meter.
24. Unison - two or more instruments sounding the same note.
25. Vibrato - a slight wavering of tone.

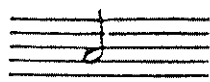
Musical Directions

1. Accelerando - perform gradually increasing speed
2. Adagio - perform at a very slow and expressive tempo
3. Agitato - excitedly, agitatedly
4. Allargando - slower and louder, in broader style
5. Allegretto - moderately, quickly & cheerfully, but not as quickly as allegro
6. Allegro - fast & lively tempo
7. Andante - moderate tempo
8. Animato - animatedly, with spirit
9. A poco - gradually
10. A tempo - return to original tempo
11. Crescendo - perform with a gradual increase in volume
12. D. C. - da Capo = repeat the piece from beginning to end
13. D. S. - Dal Segno = return to the mark and repeat the passage
14. Diminuendo - perform with a gradual decrease in volume
15. Dolce - perform sweetly
16. Fine - the end
17. Largo - broad, very slow tempo
18. Legato - smoothly; without any interruption between notes
19. Leggiero - lightly, delicately
20. Lento - slow tempo
21. Marcato - marked, with emphasis
22. Moderato - moderate tempo
23. Presto - a very fast tempo
24. Ritardando - rit, ritard; gradually slowing down the tempo
25. Sempre - always
26. Subito - sub., suddenly
27. Tutti - all; everyone resume playing

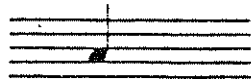
NOTES AND RESTS



Whole note



Half note



Quarter note



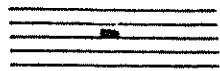
Eighth note



Sixteenth note



Whole rest



Half rest



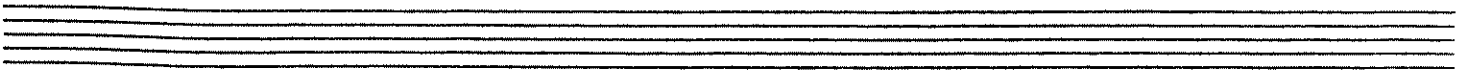
Quarter rest



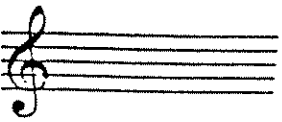
Eighth rest



Sixteenth rest



KEY SIGNATURES (MAJOR KEYS)



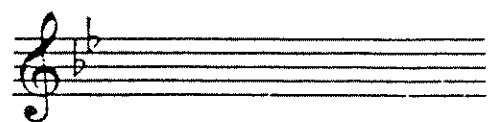
C



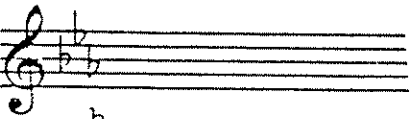
G



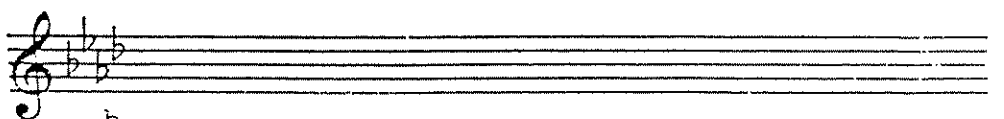
F



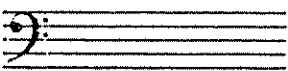
B^b



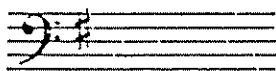
E^b



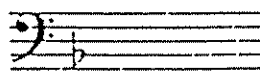
A^b



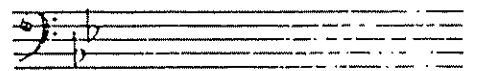
C



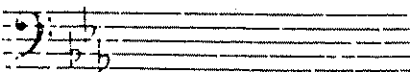
G



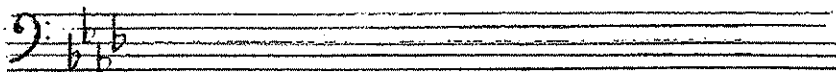
F



B^b






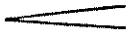
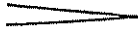



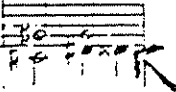

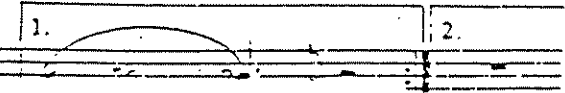
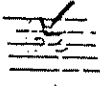
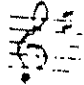


E^b



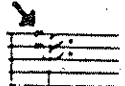
A^b

Musical Signs

1.  accent - an emphasis on a note
2. *sfz* sforzando - with a sudden strong accent on a single note or chord, followed immediately by (piano)
3.  cut time 2/2 meter
4.  bar lines - the lines on the staff that mark off measures
5.  bass clef
6.  common time 4/4 meter
7.  crescendo - perform gradually increasing volume.
8.  decrescendo - perform gradually decreasing volume.
9.  dotted note - increases the value of note by one half
(ex: a dotted quarter equals 3 eighth notes)
10.  double bar - indicates the end of a section or movement of a composition.
11.  double flat - indicates the note is lowered 2 half steps
12.  double sharp - indicates the note is raised 2 half steps
13.  fermata - note or rest should be held.
14.  1st & 2nd endings - indicates to play the notes under the first ending, repeat the passage, and finish by playing the notes under the second ending.
15.  flat - indicates note is played one half step lower.
16. *f* forte - loud
17. *ff* fortissimo - very loud
18.  key signature - indicates the key of a composition by its sharps or flats.


19. *mf* mezzo forte - medium loud

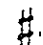
20. M.M. metronome marking - indicates the speed of the music.

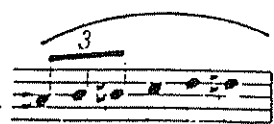
21.  natural - indicates a note is neither sharp nor flat.


22. *pp* pianissimo - very soft

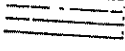
23. *p* piano - soft

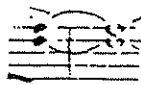
24.  repeat sign - indicates section should be repeated.

25.  sharp - indicates the note is raised one half step.


26.  slur - tongue only the first note

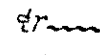
27.  staccato - indicates the note should be played short, bright, separated.


28.  staff - five horizontal lines on which notes are written to indicate their pitch.

29.  tie - connects two notes of the same pitch uniting them into a single sound.

30. $\frac{3}{4}$ time signature - 2 numbers at the beginning of a piece that indicate the meter.

31.  treble or G clef

32.  trill - the rapid alternation of two notes, which produces a warbling effect.

33.  triplet - a group of 3 notes played in the time of 2 similar ones.